

# INTERNATIONAL DOOR, INC.



Proscenium Door

- Vertical Lift Doors
- Turnover Doors
- Four-Fold Doors
- Coiling Fabric Doors
- Sliding Doors
- Acoustical Doors
- Corrosion Resistance Doors
- Blast Resistance Doors
- Fire Doors
- Airplane Hangar Doors
- Canopy Doors
- Crane Way Doors
- Hi-Speed Folding Plastic Doors
- Sectional Overhead Doors
- Rolling Steel Overhead Doors
- Personnel Passage Doors
- Dock Leveler Equipment
- Custom Fabricated Doors
- Rest Room Partitions and Accessories
- Control Panels



## AND BYRNE HANGAR DOOR DIVISION



3 pc. Vertical Lift





## **This is International Door**

International Door, Inc., and our Byrne Hangar Door Division have been designing, manufacturing, installing and servicing industrial and hangar doors and control systems since 1936. Our reputation for reliability began with that very first door — still operating today.

## **The design experts**

As specialists in industrial and hangar doors, we have the experience, CAD capabilities and resources to design the right door and electrical controls for your needs. Blast resistant doors are available in side sliding, vertical lift or turnover types. Sound control doors which meet your Sound Transmission Class (STC) requirements are available in vertical lift, turnover, four-fold and side-sliding models. Hangar doors are built in sizes to suit small helicopters as well as 747s.

You can choose from standard equipment or allow International Door to custom design a system that meets your specific traffic patterns, usage frequency and environmental needs. Personnel pass doors are available for most systems.

## **We install quality**

International Door's quality control process monitors your project every step of the way — from the construction contract through engineering and production — to “just-in-time” delivery and installation.

## **Maintaining our reputation**

Our products are manufactured with care and precision to withstand the toughest operational and environmental demands. The quality reputation of International Door is supported by our customer service record and in-stock availability of replacement parts.

International Door, Inc. is the choice of customers throughout the U.S. and around the world.

# **CONTROL PANELS**

- Complete electrical control systems have integrated door, dock leveler and trailer restraints and leveling controls.
- Variable frequency controls provide ultra-smooth acceleration and deceleration
- Assembled control panel is U.L. approved (E-145876)
- Programmable controllers feature all solid-state controls

**All electrical control panels are designed and built at International Door.**

**For more information visit our Web Site @  
[www.international-door.com](http://www.international-door.com)**





# VERTICAL LIFT DOORS

08 34 19/INT  
BuyLine 2951

## Construction

- Counterweighted, structural steel framing
- 14-gauge exterior/16-gauge interior steel cladding
- Meets all wind loading requirements
- 3" minimum thickness

## Maintenance

- Maintenance free hardware with factory sealed ball bearing rollers
- Shop-primed exposed and concealed surfaces
- Delivers long service life with minimum maintenance

## Operation

- Safety sensor edge with series circuit reliability
- Auxiliary hand-chain operation
- Includes electric motors, brakes & enclosed gearboxes

## Options

- High Speed: Opens at 180'/min.; Closes at 90'/min.
- Multiple windows and personnel passage doors
- Sound Transmission Class (STC) 49 acoustic rating (ASTM E413-73)
- Floating panel to accommodate truck dock leveler



**Vertical Lift with Break Away Panel**

- Stainless or galvanized doors for specialized use
- Standard blast resistance of 100 PSF. Custom designs are available for higher pressures
- Easy-to-repair "break away" sections
- Variable speed controls for smooth open/close operation
- Thermal insulation to match or exceed surrounding walls
- Solid-state, programmable controllers
- Smooth, shock-free fluid-drive hydraulic operation
- Fire-resistant doors with fusible link-closing devices

# FABRIC DOORS

## Construction

- Low profile
- Built in "wind bars"
- Full width vision panel
- No springs, rollers or counterweights
- UHMW rub bars to reduce friction

## Maintenance

- No special tools required
- "Lock-down" type hinges
- Guide tracks permit easy access to fabric
- Delivers long service life with minimal maintenance

## Operation

- High speed operation
- Direct drive system
- Safety sensor edge
- Auxiliary hand crank operation
- NEMA designed motors, brakes and high efficiency reducer
- UL labeled control panel

## Options

- Fully automatic with floor loops and electric eyes
- Radio controls
- Pull cord controls
- Interlocked sequential operation of two doors
- Solid state or programmable controllers



**Model 2002 A**



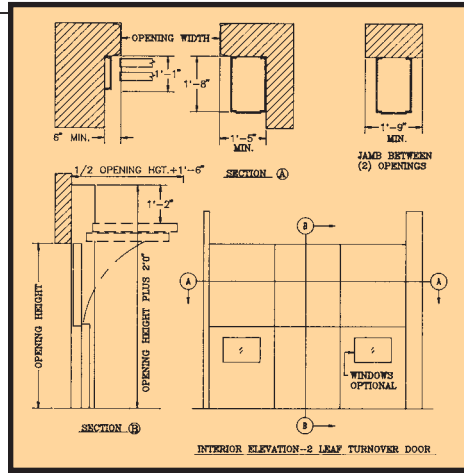
**Model 2004 C**



# TURNOVER/ FOUR-FOLD DOORS



## TURNOVER DOORS



### Construction

- 14-gauge exterior/16-gauge interior steel cladding
- No sliding contact
- Meets all wind-loading requirements
- Requires only 2' of headroom
- Self-supporting horizontal tracks require no ceiling/roof load
- 3" minimum thickness

### Maintenance

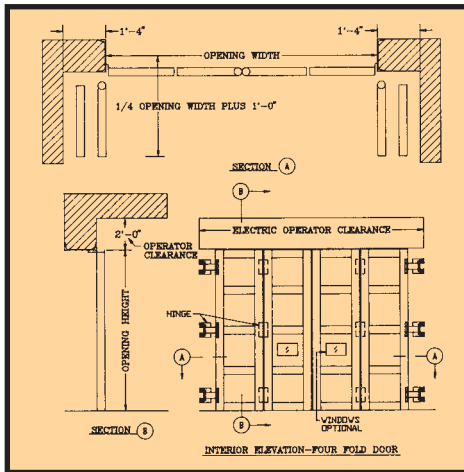
- Maintenance free hardware with factory sealed ball bearing rollers
- Shop-primed exposed and concealed surfaces
- Delivers long service life with minimum maintenance

### Operation

- Safety sensor edge with series-circuit reliability
- Includes electric motors, brakes & enclosed gearboxes



## FOUR-FOLD DOORS



# CRANE WAY DOORS



Designed for passage of materials, trucks, rail cars, and crane loads at ground level. Motorized or manually operated bottom rolling, slide doors or swing type doors are provided in conjunction with top crane way doors. The combination of the door system has electrical and mechanical interlocks to provide a perfect sequence of operation to avoid any possibility of damage to door system, vehicle or personnel.

IDI'S experienced engineers will study carefully the specific needs and recommend the proper crane door system and provide design data, specifications and coordinate with building contractor for clearances, etc.

- Crane way doors provide for openings where overhead crane passes through
- Most commonly used type of crane door is a top hinged swing up model
- Vertical lift & canopy type of crane way doors are also available as an option



# SPECIAL PURPOSE DOORS AND OPTIONAL FEATURES

## SPECIAL PURPOSE DOORS

### Railroad Doors

Provides railcar access to loading docks inside the plant. The doors are interlocked with signal systems to provide safe entry. Single and multi-track sizes and types are available.



### Insta-Clear PVC Doors (not pictured)

Constructed of structural steel tubular frames with 3/8" thick PVC panels that are durable, transparent and insensitive to ultraviolet light. Hinges are heavy-duty and are provided with a torque arm system. Easy to install and low maintenance. The electric motor operators allow for an extremely fast opening and closing (ex: 10'x10' opening in 1.3 secs). It can also be manually operated in case of power failure.

### Roof Hatches

Pictured are four roof hatch closures 105' long - seven leaves per hatch. They slide horizontally to provide crane access to painting and curing booths.



## OPTIONAL FEATURES

### Personnel Passage

When egress is required, doors can be designed with one or more personnel doors built into the main door.

### Corrosion Resistance

All types of doors can be constructed using stainless steel or galvanized materials for use in ovens, test cells, wash racks, spray booths or other hostile environments.

### Sound Control

Acoustical doors are available which meet Sound Transmission Class (STC) 49 rating as defined by ASTM designation E413-73.

### Blast Resistance

Standard doors, which withstand blast pressures up to 100 pounds per square foot, are available. Custom doors can be engineered to withstand higher pressures. Doors can also be designed to relieve blast pressure.

### Fire Resistance Doors

Vertical lift doors up to 3 hours rating with "UL" or manufacturer's certificate (oversize doors)



Environmental Booth



## OUR CUSTOMERS

General Motors Corporation  
U.S. Army Corps of Engineers  
Port Authority of Allegheny Cty., PA  
Gary Public Transportation Corp.  
Nissan Motor Mfg. Corp., U.S.A.  
Ford Motor Company  
DaimlerChrysler Corporation  
Caterpillar Tractor  
National Steel  
Dow Chemical  
MCI

The Timken Company  
Rouge Steel Company  
U.S. Navy  
Mazda, U.S.A.  
NASA  
Subaru-Isuzu, U.S.A.  
Boeing Airplane Co.  
U.S. Air Force  
General Dynamics  
The Budd Company  
American Airlines

United Airlines  
Delta Airlines  
Northwest Airlines  
TWA  
Toyota, U.S.A.  
Mack Truck  
TRW  
Ragu Foods  
LTV Steel  
Mercedes-Benz  
Honda Motors



**Dryer Door**



**2 pc. Vertical Lift Door**



**Vestibule Gate**



## INTERNATIONAL DOOR, INC.

8001 Ronda Drive  
Canton, Michigan 48187  
**(734) 459-3000**  
**FAX: (734) 459-8962**  
[www.international-door.com](http://www.international-door.com)

ISO 9001:2000 Registered

see us at  
**Sweets.com**